




#ConnectionMatters Facilitators



Amy McDonald



David Pavish



1



Waterfall Chat

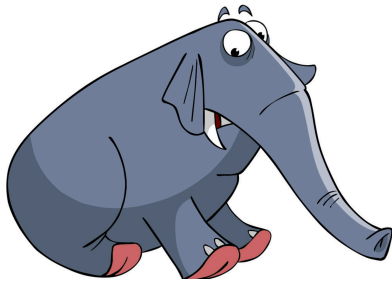
Use the Chat box to answer the question







2



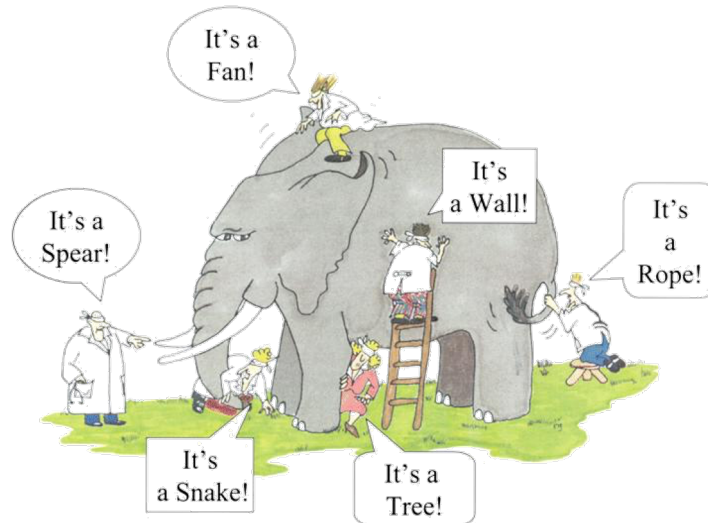
The Elephant in the Room: Why Integrative Youth Development (IYD)?

- **IYD is not a program and “yet one more thing” to do.**
It supports what you are already doing!
- **All students can see themselves and each other in “full color” –**
give students and the adults who care about them opportunities that
bring out each person’s strengths and unique qualities
- **Coach adults to amplify “what’s right” with a student –**
Kids aren’t broken needing to be fixed; celebrate their strengths.
- **Do stuff WITH students –** rather than TO them or FOR them.
This increases engagement and builds mutual exchange of relationship



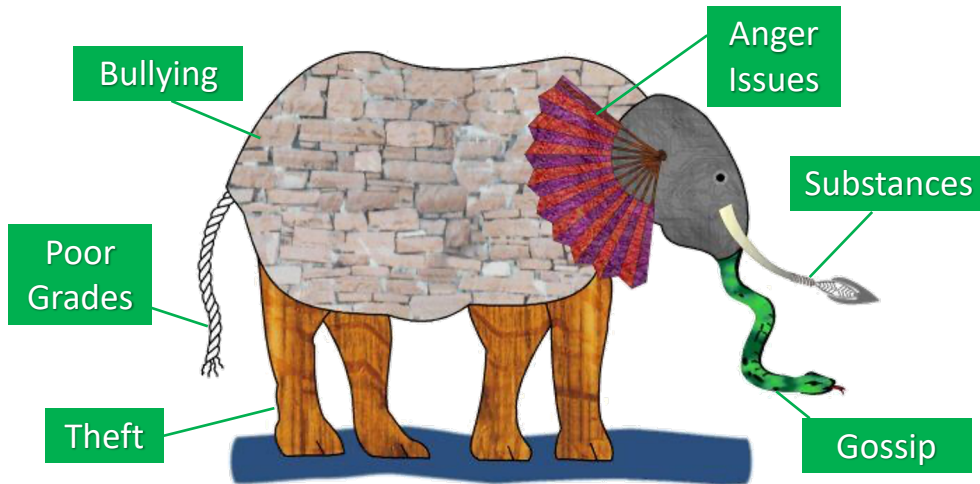
3

Parable of the Elephant



4

Parable of the Elephant



5


We Focus on the Elephant




Art by Linda Lynn

6

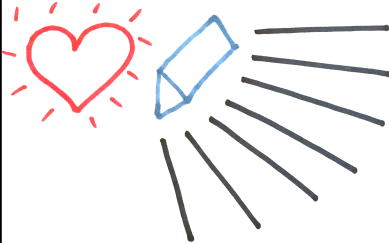
Love Through the Lens of Science






7

Love Through the Lens of Science





8

Love Through the Lens of Science

A hand-drawn diagram on a white background. On the left is a red heart with radiating lines. To its right is a blue-outlined prism. Five black lines (rays) originate from the prism and point towards the right. Each ray is labeled with a chemical symbol: 'K' (black), 'H' (blue), 'G' (green), 'O' (yellow), and 'R' (red). The 'R' is at the top of the rays.

9

RED: The Rule of 5, Power of More

A hand-drawn diagram on a white background, similar to the one on slide 9. It features a red heart, a blue-outlined prism, and five rays labeled 'K', 'H', 'G', 'O', and 'R'. Above the rays, the text 'R - Rule of 5' is written in red. To the right of the rays, there are five red 'X' marks scattered across the space.

10

ORANGE: Tangible Strings

R-Rule of 5
O-Tangible Strings

Brightways Learning

11

YELLOW: Intangible Strings

R-Rule of 5
O-Tangible Strings
Y-Intangible Strings

Brightways Learning

12

GREEN: Growing the Balloon

The diagram illustrates the 'Rule of 5' for growing a business. It features a red heart with radiating lines, a blue balloon, and a network of strings connecting five points marked with 'X'. The strings are color-coded: red for 'Tangible Strings' and yellow for 'Intangible Strings'. A green circle highlights the 'Growing the Balloon' concept. Below the heart, three green circles represent growth percentages: 10%, 80%, and 10%.

R - Rule of 5
O - Tangible Strings
Y - Intangible Strings
G - Growing the Balloon

10% 80% 10%

Brightways Learning

13

GREEN: Growing the Balloon

The diagram illustrates the 'Rule of 5' for growing a business. It features a red heart with radiating lines, a blue balloon, and a network of strings connecting five points marked with 'X'. The strings are color-coded: red for 'Tangible Strings' and yellow for 'Intangible Strings'. A green circle highlights the 'Growing the Balloon' concept. Below the heart, three green circles represent growth percentages: 10%, 80%, and 10%.

R - Rule of 5
O - Tangible Strings
Y - Intangible Strings
G - Growing the Balloon

10% 80% 10%

Brightways Learning

14

BLUE: Scissor Cuts

R - Rule of 5
 O - Tangible Strings
 Y - Intangible Strings
 G - Growing the Balloon
 H - Scissors Cuts

10% 10% 80%

Brightways Learning

15

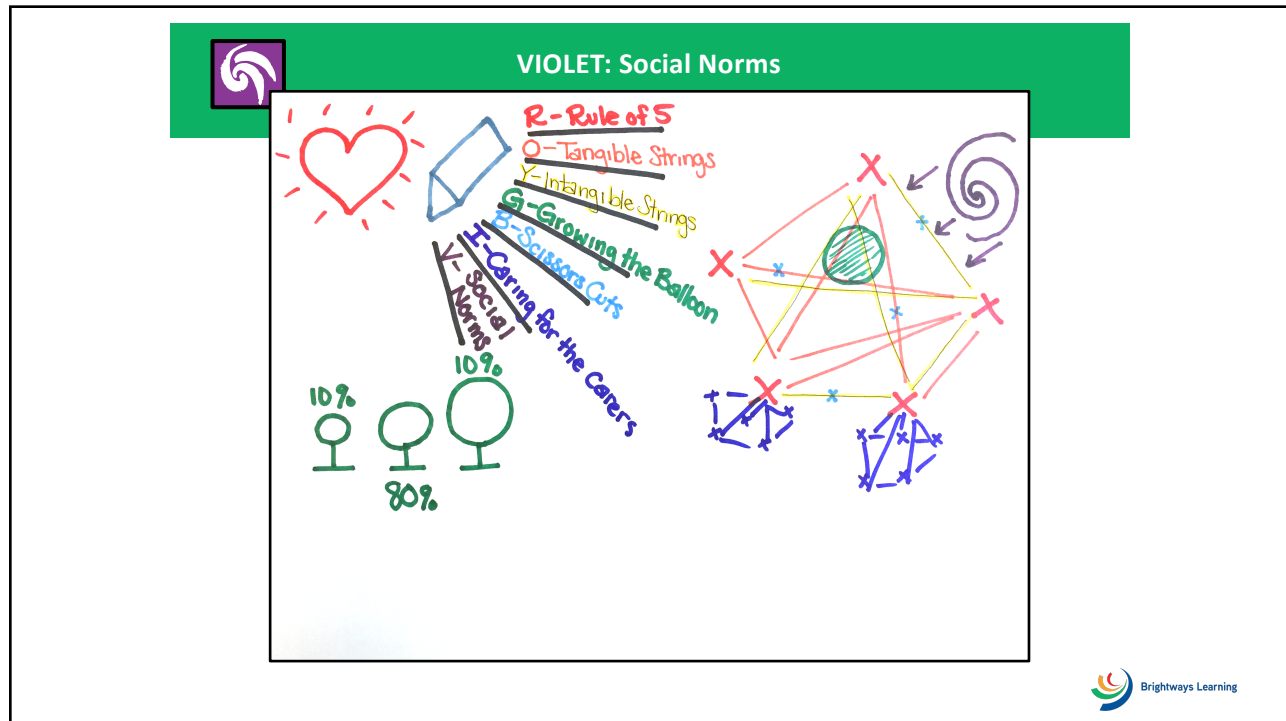
INDIGO: Caring for the Carers

R - Rule of 5
 O - Tangible Strings
 Y - Intangible Strings
 G - Growing the Balloon
 H - Caring for the Carers

10% 10% 80%

Brightways Learning

16



17

Integrative Youth Development (IYD)TM
The Full-Color Approach

R O Y G B I V

IYD uses each color to represent
 a “PHactor” needed to ensure a rich developmental ecology
 for ALL youth and for us.

Each PHactor is validated by the best youth development research
 being done in the world today.

Brightways Learning

18

What Concepts Are We Integrating?



Wisdom of the Elders



Bible & Torah



Voltaire - Candide
"toxic/chronic positivity"



Peter Benson, Developmental Assets



Kurt Hahn,
Outward Bound



Medical Model, DSM 1 in 1952



Abraham Maslow, Motivation



Emmy Werner,
Children of Kauai



Michael Rutter, Mental Illness



Ed Garmezy, Schizophrenic study



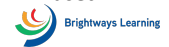
Carol Gilligan,
Moral Development
Through Relatedness



Angela Duckworth, Grit



Carol Dweck, Growth Mindset



19



Anchors can be any adult, and they typically:



- see each youth's unique talents and "smarts"
- expect more of the youth than they expect of themselves
- parent, teach, mentor, coach, guide, etc. the youth into those expectations
- sincerely care for the well-being of the youth

It is the YOUTH who CHOOSES who their Anchors are!



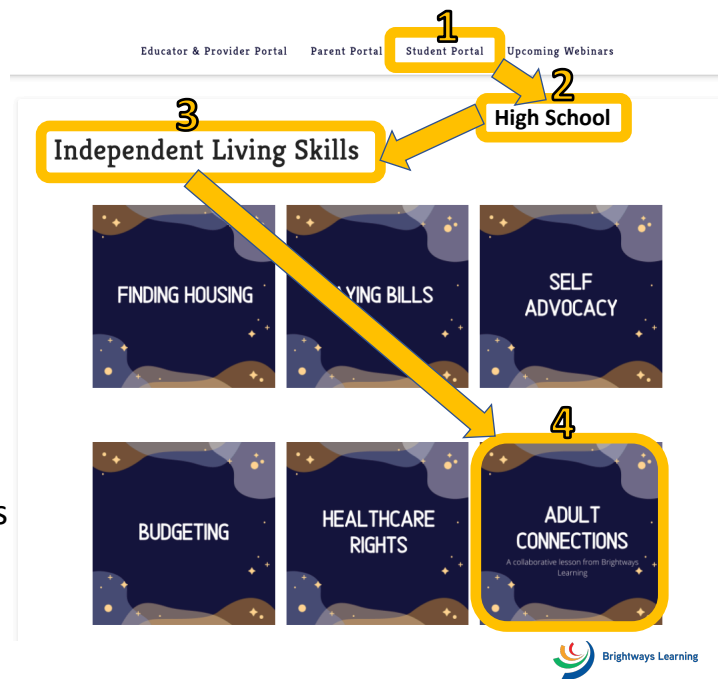
20

Student Lesson: “Adult Connections”

Login at transitionalaska.org

Navigate to the Lesson:

1. Student Portal
2. High School
3. Independent Living Skills
4. Adult Connections



21

Student Lesson 1 Activity: Anchor Qualities

Anchor Qualities																	
<p>Anchors are ADULTS in your life, who you may know. Each adult has various qualities about them – what they value and believe, how they act when they are by themselves, and how they act when they are with others.</p>																	
<p>What They Do</p> <table border="1"> <tr><td> </td></tr> <tr><td> </td></tr> <tr><td> </td></tr> <tr><td> </td></tr> <tr><td> </td></tr> <tr><td> </td></tr> <tr><td> </td></tr> <tr><td> </td></tr> </table>									<p>Who They Are</p> <table border="1"> <tr><td> </td></tr> <tr><td> </td></tr> <tr><td> </td></tr> <tr><td> </td></tr> <tr><td> </td></tr> <tr><td> </td></tr> <tr><td> </td></tr> <tr><td> </td></tr> </table>								

1. Start by thinking about one of your Anchors.
2. Who They Are: What kinds of beliefs and values have they shown to you? **WRITE** in one or more in the table rows **INSIDE** the hand outline below.
3. What They Do: What kinds of actions or behaviors have they shown to you? **WRITE** in one or more in the table rows **OUTSIDE** the hand.
4. Use this organizer when thinking about one of your Anchors. Repeat on a copy of this page or on this same organizer to reflect on more of your Anchors.

22



Waterfall Chat

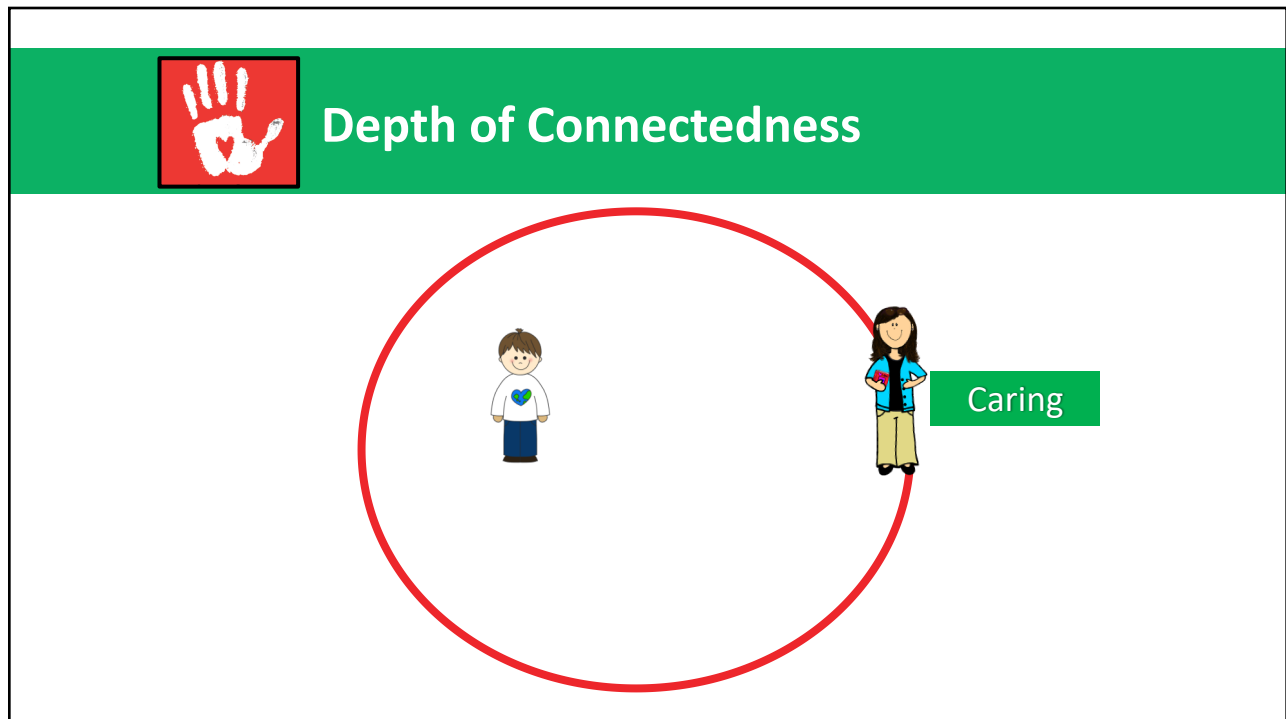
Use the Chat box to answer the question



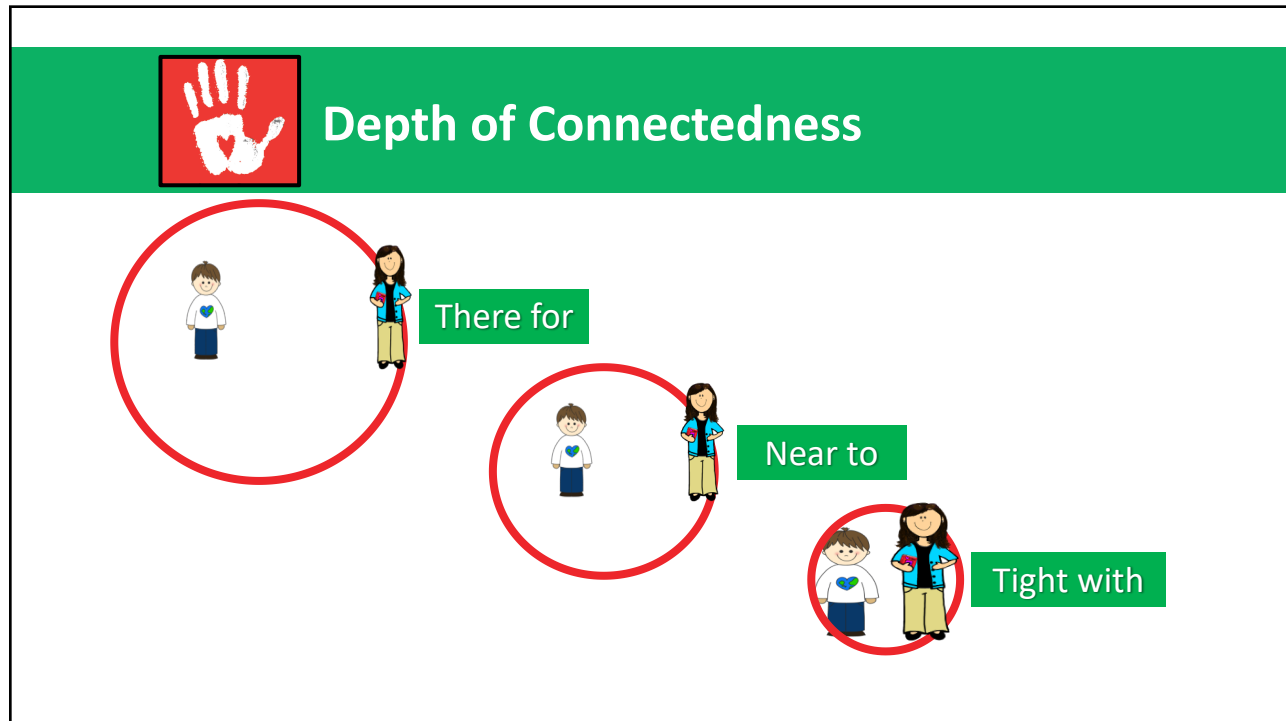
00:27 [video icon] [microphone icon] [screen share icon] [more options icon] [hand icon] [chat icon] [people icon] [end call icon]



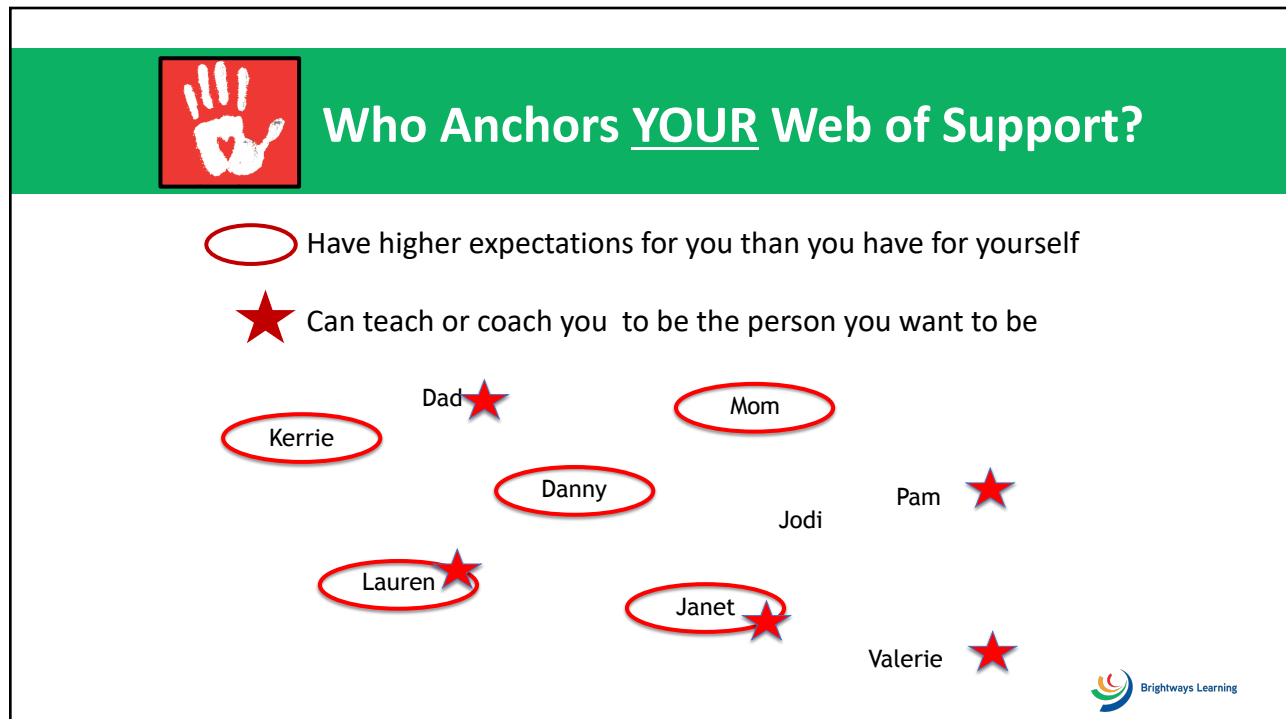
23



24



25



26

Student Lesson 2

Activity:

My Anchor Map

My Anchor Map

1. **PICK** one of the shapes on the right - Heart, Circle, Square, or Triangle, depending on the Anchor you have in mind.

2. Then, **DRAW** the shape in the circle area below that corresponds to how connected that Anchor is to you.

If you identify that adult as someone not yet in your Web of Support, but whom you would like to get connected to, then place the adult outside in the Caring area.

3. In the middle of the shape, **WRITE** the initials of that Anchor.

Anchors are ADULTS in your life, who you may know from various places in your world. The shapes below represent the most common places.

HEART	CIRCLE	SQUARE	TRIANGLE
From Family	From School	From Community	From Faith Community

© Copyright 2011 Brightways Learning & Coaching LLC



27

Waterfall Chat

Use the Chat box to answer the question

00:27

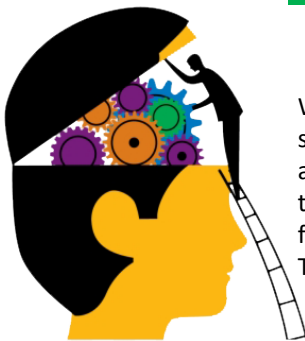
28



29

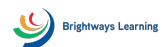
The Empowered Mind

Thursday, March 4 @1:00-2:30pm



We'll delve into how the brain makes decisions and can develop new skills and behaviors. These concepts are key ingredients for academic engagement and social-emotional growth. Learn an easy-to-apply framework for making and measuring decisions that is also featured in a second interactive student lesson offered through Transitions Alaska.

Register today – tell your friends!



30



What Next??

We're a Webs of Support School!

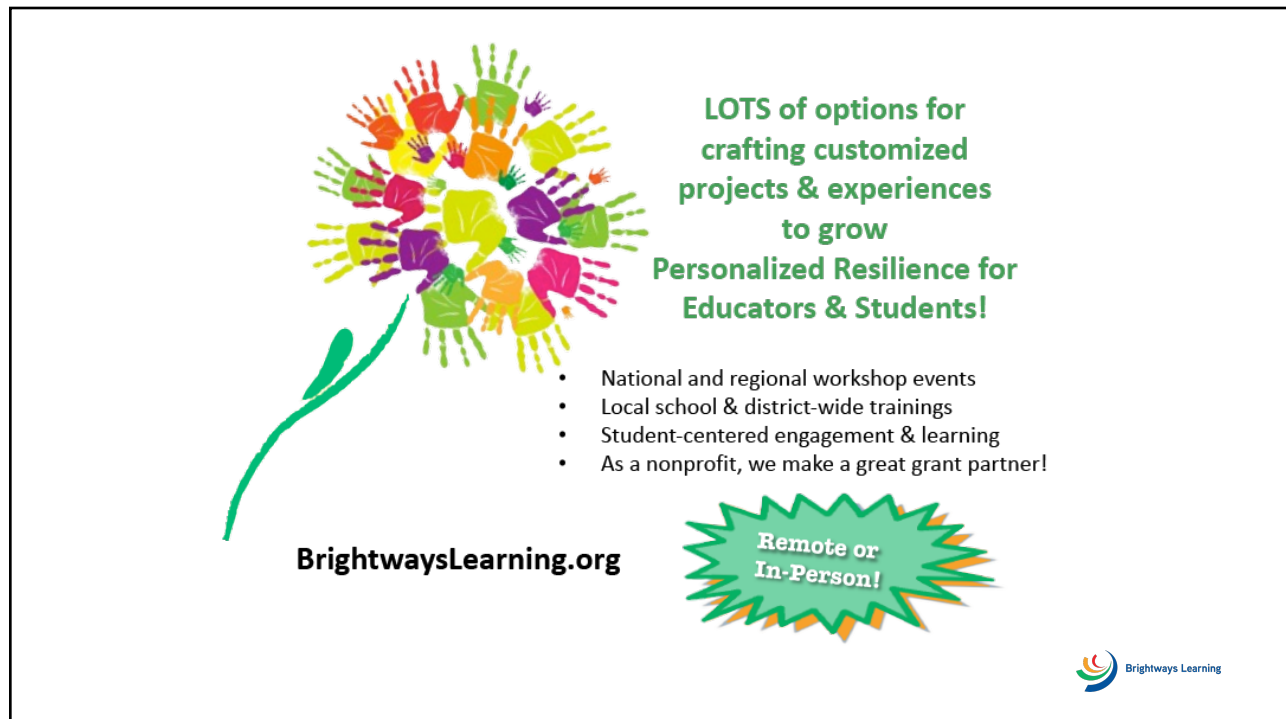
Resilient Educator!

Practi Lessons

Survey Trends Graph

Brightways Learning

31



BrightwaysLearning.org

Remote or In-Person!

LOTS of options for crafting customized projects & experiences to grow Personalized Resilience for Educators & Students!

- National and regional workshop events
- Local school & district-wide trainings
- Student-centered engagement & learning
- As a nonprofit, we make a great grant partner!

Brightways Learning

32



спасибо 谢谢
GRACIAS
THANK YOU
 ありがとうございます **MERCI**
DANKE धन्यवाद
 شُكراً **OBRIGADO**

Quick Feedback Please take a few minutes to take the [short survey \(link in the Chat box\)](#) to help us help you & your students!

